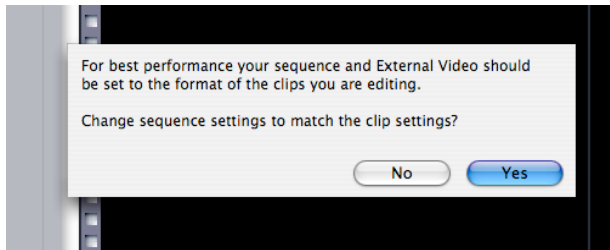


## Workflow – Finishing in HD

This document will give you a hand in how to finish your projects in HD for viewing in the school. For this years' screenings we will be attempting to show your projects on Bluray disc. We will be compiling the video files onto screener discs which will then play through on the evening. Hopefully upon following these guidelines, you will be able to present the techs with a properly formatted file that will truly represent the production you've worked so hard on.

### Step 1. – Editing Correctly!

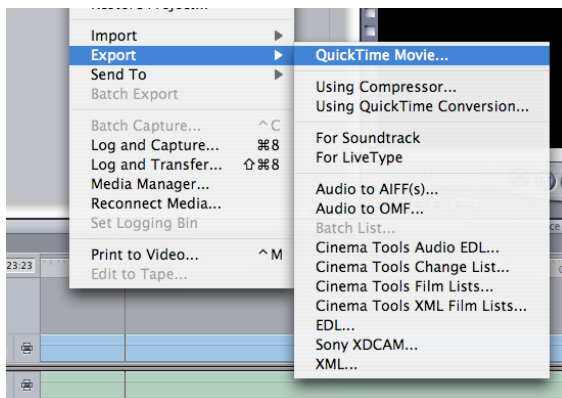
The biggest mistake editors make is using the wrong sequence settings for their footage. Luckily with FCP 6.04 this error is generally removed from the equation. Simply drop your footage into the timeline and FCP will ask if you wish to use the properties of the footage as your sequence settings. With the majority of cameras we use here, the answer would be YES.



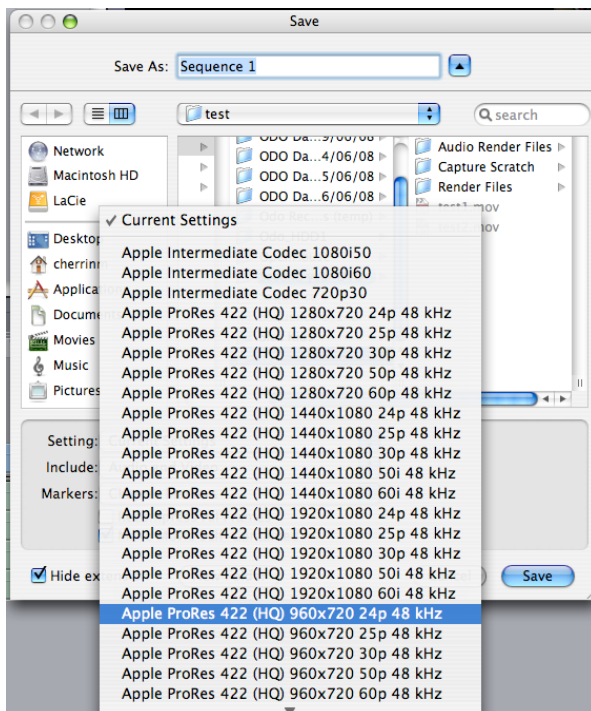
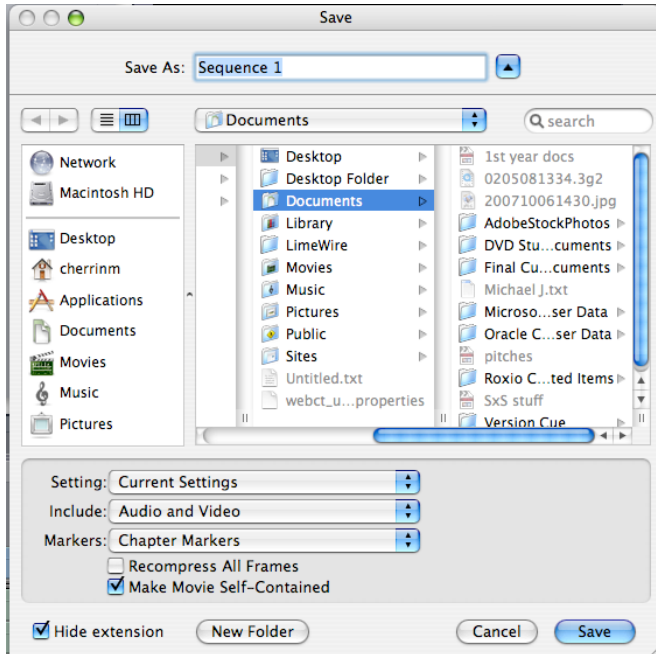
Now you may edit away knowing that your sequence is matched to your footage. The only caveat to this process is if you introduce footage that doesn't match the properties of the initial footage imported. Basically..... DON'T shoot multiple formats!! This will screw up a myriad of things. If you did shoot multiple formats, you'll have to consult a technologist (WAY in advance of the screenings).

### Step 2. – Export Your Sequence

Once you've done all your editing, you may export your HD quicktime sequence. If you've managed to complete your edit without messing around with your sequence settings, this should be very straightforward. In FCP, click FILE, EXPORT, Quicktime Movie...



The Next dialog box will appear. Choose a name and location for your file and click on the setting drop-down box.



We will use Apple ProRes 422 (HQ) as the codec to output you HD file. Before you choose the proper version, however, you must know the resolution of you sequence. The following list shows the cameras and the most popular formats they shoot:

<b>Camera format</b>	<b>Apple ProRes (HQ) format</b>
Sony EX1 – 1920x1080 24p HQ	1920x1080 24p 48khz
Sony EX1 – 1920x1080 60i HQ	1920x1080 60i 48khz
Sony EX1 – 1440x1080 24p SP	1440x1080 60i 48khz
Sony EX1 – 1440x1080 60i SP	1440x1080 60i 48khz
Sony S270 – 1440x1080 24p HDV	1440x1080 60i 48khz
Sony S270 – 1440x1080 60i HDV	1440x1080 60i 48khz
Panasonic HVX200 – 720PN24	1440x1080 24p 48khz

Once you've selected the proper ProRes format, save your new quicktime file. Just know that it'll be quite large. When delivering this file, we will either make a space on the server, or you will have to bring a hard-drive to the techs.

In addition to delivering the quicktime file, you must also deliver a txt file with the following info:

Title: (ie. No One Likes a Mime)  
 Course and Assignment name: (ie. Live Action, Mystery Project)  
 Producer: (ie. Jane Doe)  
 Director: (ie. John Doe)  
 Duration: (ie. 00:12:35:00)  
 Export settings (ie. ProRes 422 (HQ) 1920x1080 24p 48khz)  
 Originating camera format: (ie. EX1 – 1080p24 HQ)

There you have it..... and one last thing....

**DON'T LEAVE THIS TO THE LAST MINUTE!!!!**