

Open Access:

Printers are available in the following rooms:

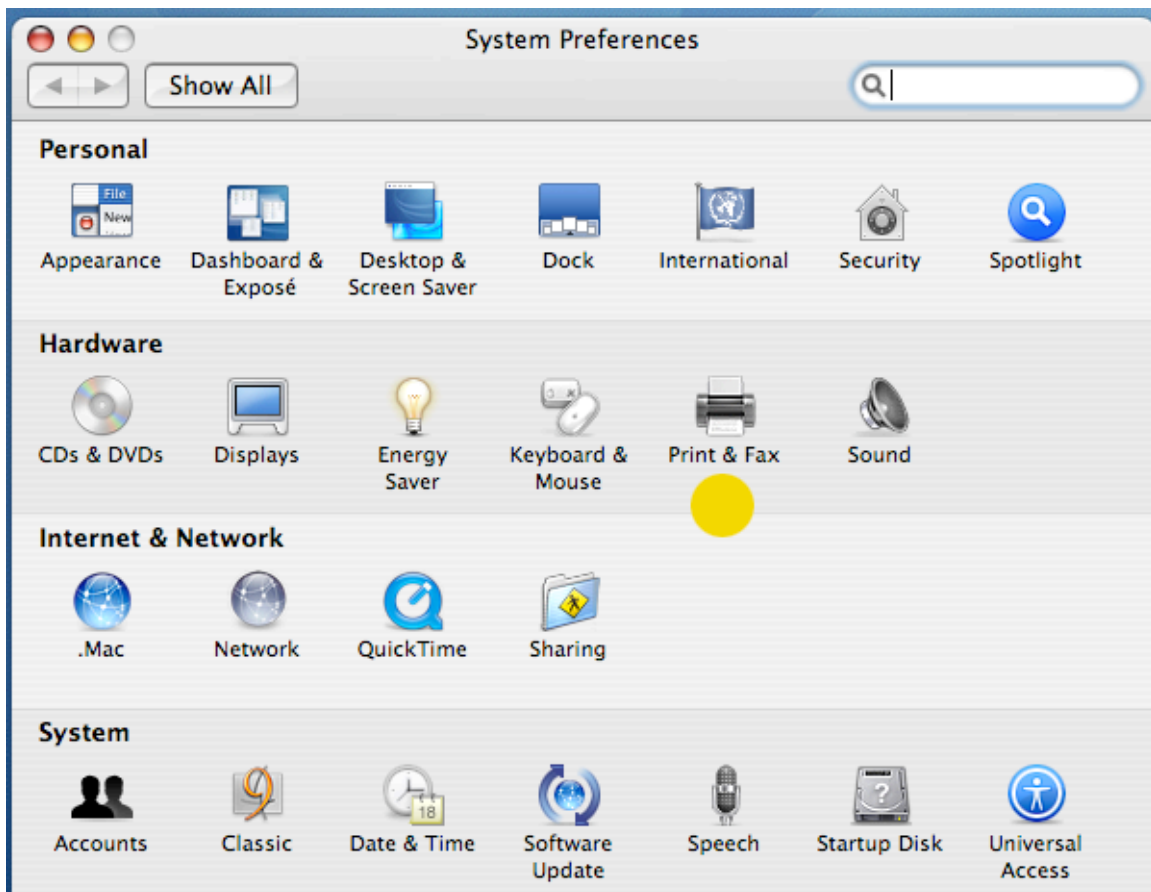
- C110
- E207

OSX PRINTING

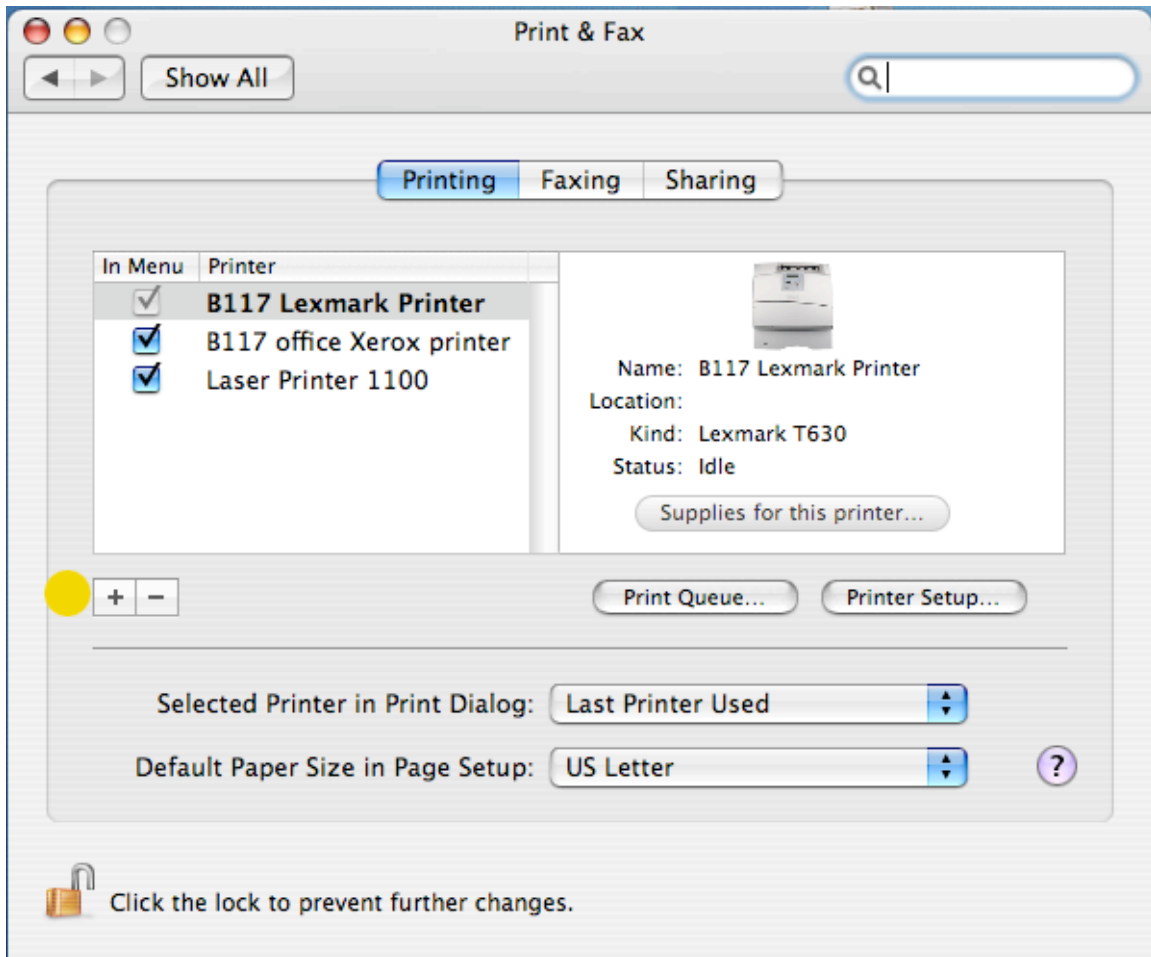
How to set up a printer on your Mac:

Select the System Preferences Icon from the **Dock**

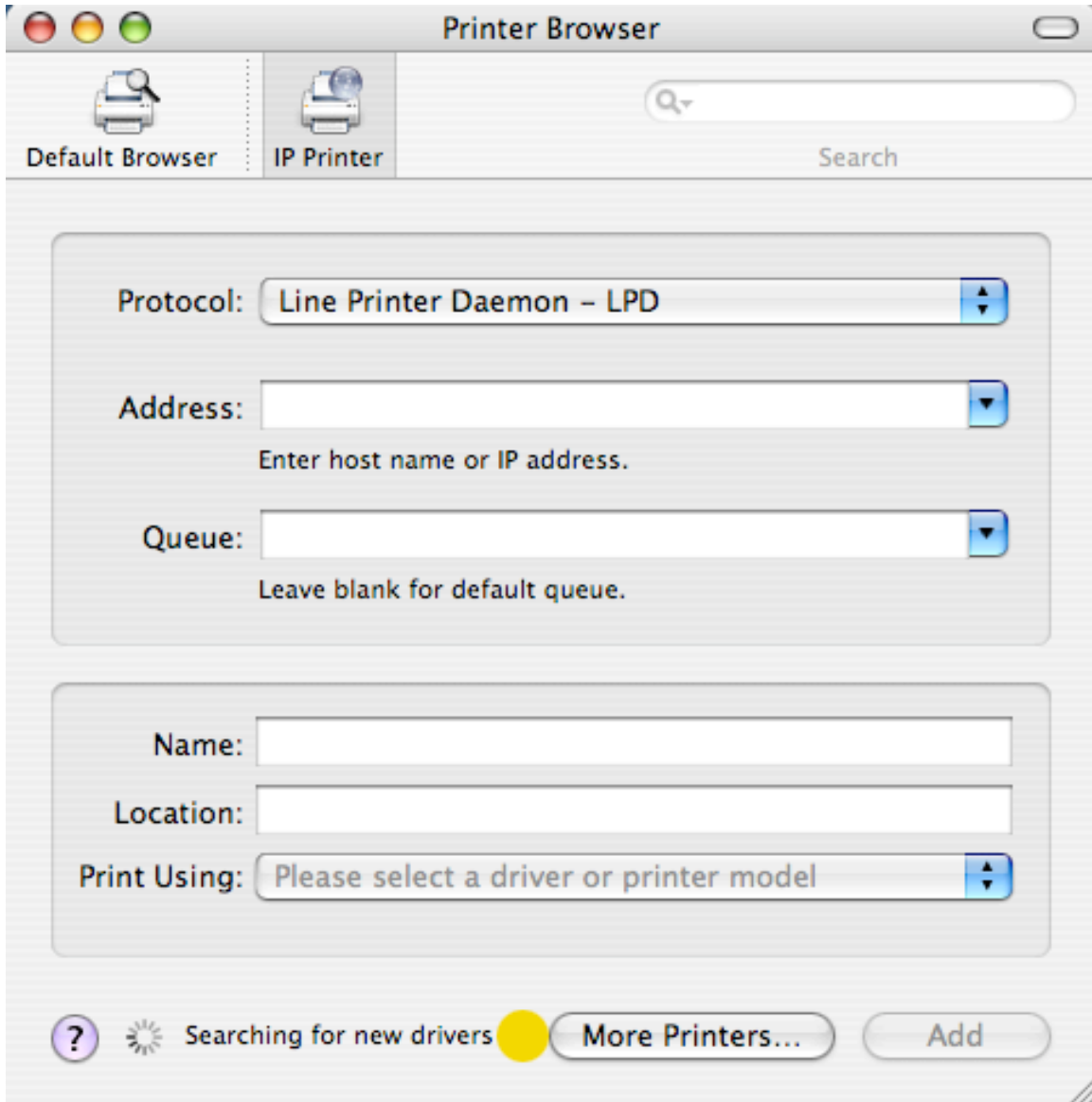
Select **Print & Fax** Icon



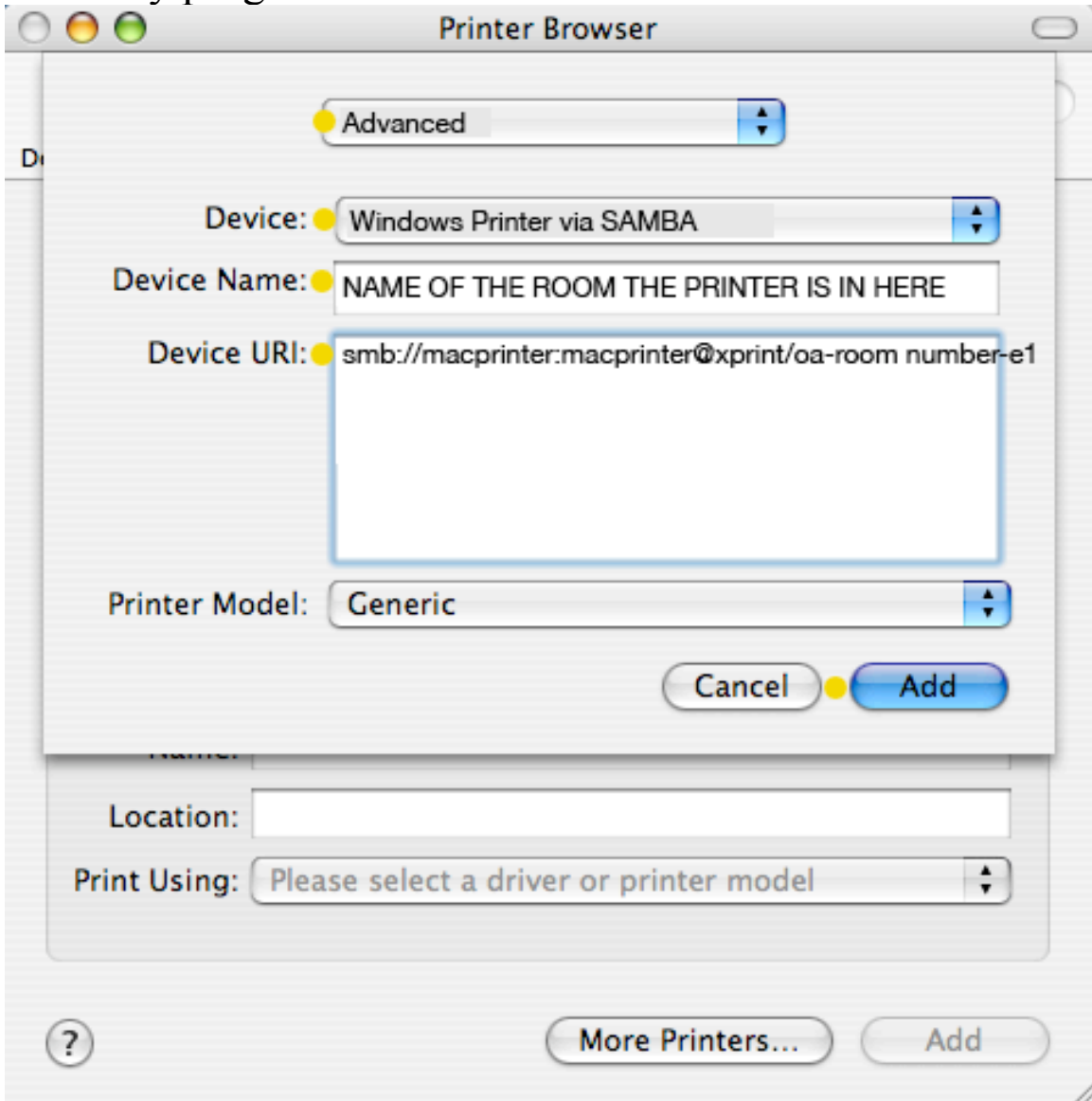
Select the **plus** symbol to add a printer



Setup Protocol as **Line Printer Daemon – LPD**
Hold the **OPTION KEY** down while selecting the **More Printers...** button



Setup your window as indicated below and **Add** the printer
The Printer will now be available in your **print dialog box**
from any program



EXAMPLE

Device Name: Printer in B115

Decice URI: smb://macprinter:macprinter@xprint/oa-b115-e1